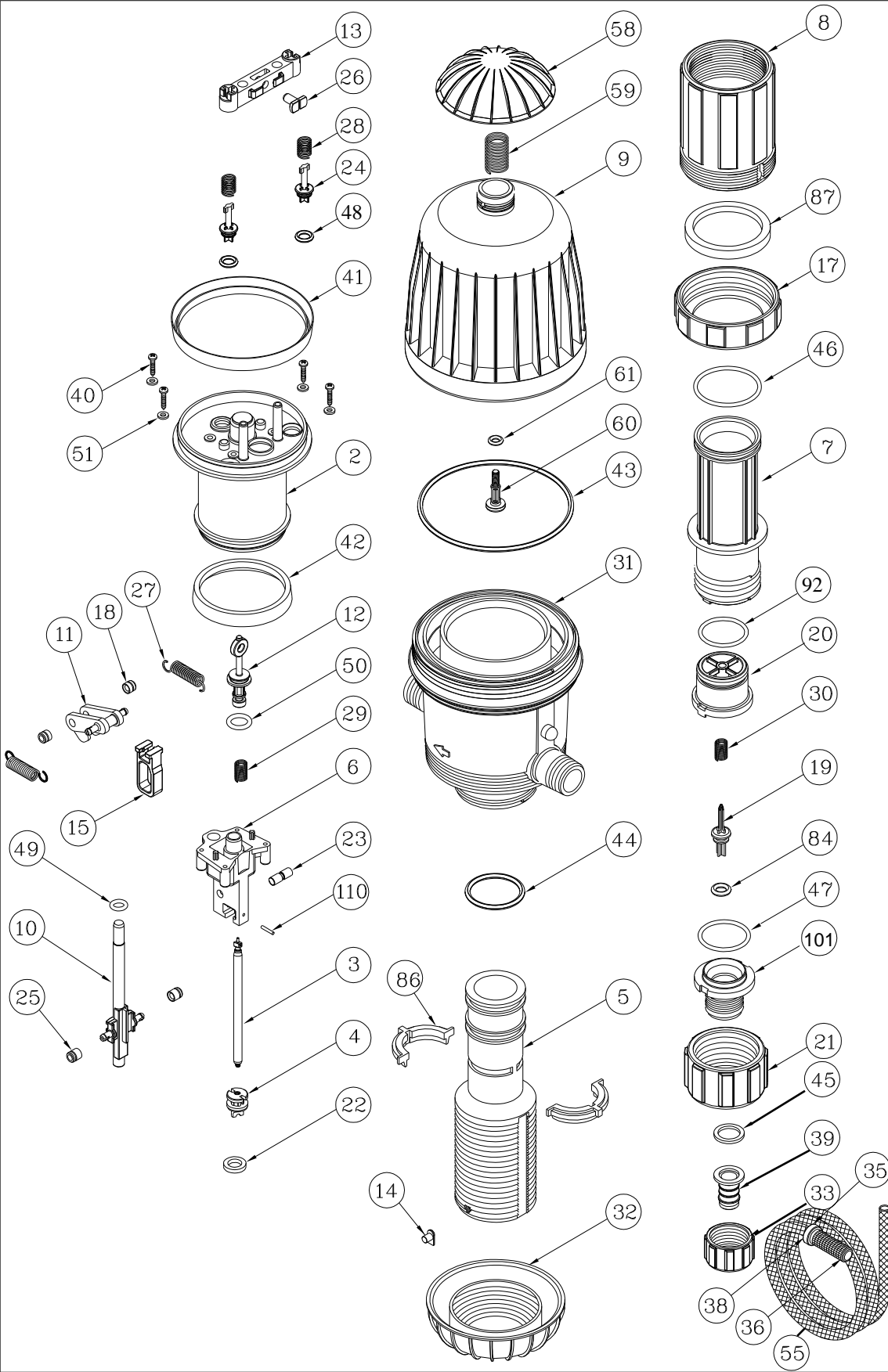


MixRite 2510 NEW- STD

LAST UPDATE
27/01/2008



| No. | PART | Cat/No. |
|-----|----------------------------|-------------|
| 2 | PISTON 100/70 | 36030168802 |
| 3 | BAR 10% | 36030181803 |
| 4 | PISTON 10% | 36030162204 |
| 5 | CYLINDER SUPPORT 10% | 36030010305 |
| 6 | BASE | 36030162206 |
| 7 | PROPORTIONING CYLINDER 10% | 36030162207 |
| 8 | PROPORTIONER 10% | 36030181708 |
| 9 | COVER GREY | 36030157309 |
| 10 | EJECTOR PIN | 36030167110 |
| 11 | TOGGLE | 36030167211 |
| 12 | VALVE 1 | 36030147712 |
| 13 | VALVE BRIDGE | 36030147513 |
| 14 | STOPPER 10% | 36019023277 |
| 15 | FRAME | 36030149915 |
| 17 | PROPORTIONER NUT 10% | 36030162217 |
| 18 | TOGGLE SLIDE | 36030167218 |
| 19 | CHECK VALVE 10% | 36030162284 |
| 20 | CHECK VALVE SLEEVE FOR 10% | 36030675102 |
| 21 | CHECK VALVE NUT 10% | 36030622100 |
| 22 | SUCTION SEAL 10% IL | 36000031022 |
| 23 | AXLE | 36030162523 |
| 24 | VALVE 2 | 36030153124 |
| 25 | EJECTOR SLIDE | 36030167125 |
| 26 | PIN | 36030167026 |
| 27 | SPRING 1 | 38060167327 |
| 28 | SPRING 2 | 38060797428 |
| 29 | SPRING 3 | 38060797429 |
| 30 | HSTY SPRING | 38028110529 |
| 31 | BODY WIDE DRILL | 36030162231 |
| 32 | NUT 1 3/4" | 36030161532 |
| 33 | NUT 3/4" HOLE 20 mm | 36030120033 |
| 35 | HOSE COVER 19 | 36030111935 |
| 36 | SUCTION FILTER 30 | 36030013036 |
| 38 | FILTER WEIGHT | 38060801038 |
| 39 | BODY OR RECORD 19*3/4" | 32454759122 |
| 40 | STAINLESS STEEL SCREW | 38060351640 |
| 41 | SEAL 101 | 36030175141 |
| 42 | SEAL 71 | 36030175142 |
| 43 | "O"RING 34X4.5 | 38060224343 |
| 44 | SEAL 34*4 | 38060222044 |
| 45 | WASHER FOR SWIVEL 3/4" | 37245581200 |
| 46 | SEAL 2-130 | 38060213094 |
| 47 | SEAL 2-108 | 38060212493 |
| 48 | "O"RING 2-109 | 38060210848 |
| 49 | "O"RING 2-109 | 38060210949 |
| 50 | "O"RING 10X3 | 38060101650 |
| 51 | STAINLESS STEEL DISC | 38060351641 |
| 55 | SUCTION TUBE 19 mm | 36030001955 |
| 58 | AIR RELEASE | 36030161658 |
| 59 | SPRING 5 | 38060000059 |
| 60 | AIR RELEASER SCREW | 36030284360 |
| 61 | "O"RING 2-107 | 38060210761 |
| 65 | MOUNTING BRACKET | 36030162765 |
| 75 | "O"RING SEAL 2-125 | 38060212575 |
| 81 | CHECK VALVE 10% | 36030162284 |
| 84 | "O"RING 2-206 | 38022060084 |
| 86 | ARC LOCK FOR NUT | 36019063278 |
| 87 | ADJUSTMENT NUT ADAPTOR 10% | 36019013376 |
| 92 | SEAL NO 2-123 | 38060212392 |
| 101 | VALVE LID FOR 10% | 36030101101 |
| 110 | STAINLESS STEEL PIN | 38060000110 |